


CPX Mooring bouy MB 120L red incl rod

Örnbojen hat eine äußere Schale aus schlagfestem Polyethylen-Kunststoff, die mit freon-freiem Polystyrol-Schaum gefüllt ist. Lochdurchmesser 60 mm.

Art.-Nr.: 30073



| Spezifikationen | |
|----------------------|---|
| Material | PE |
| Farbe | Orange |
| Volumen (L) | 120 |
| Höhe (mm) | 570 |
| Durchmesser (mm) | 580 |
| Lochdurchmesser (mm) | 60 |
| Gewicht (kg) | 17 |
| Recycling |  HDPE |

Eigenschaften



Anpassbar



Recyclbar



Großer
Temperaturbereich

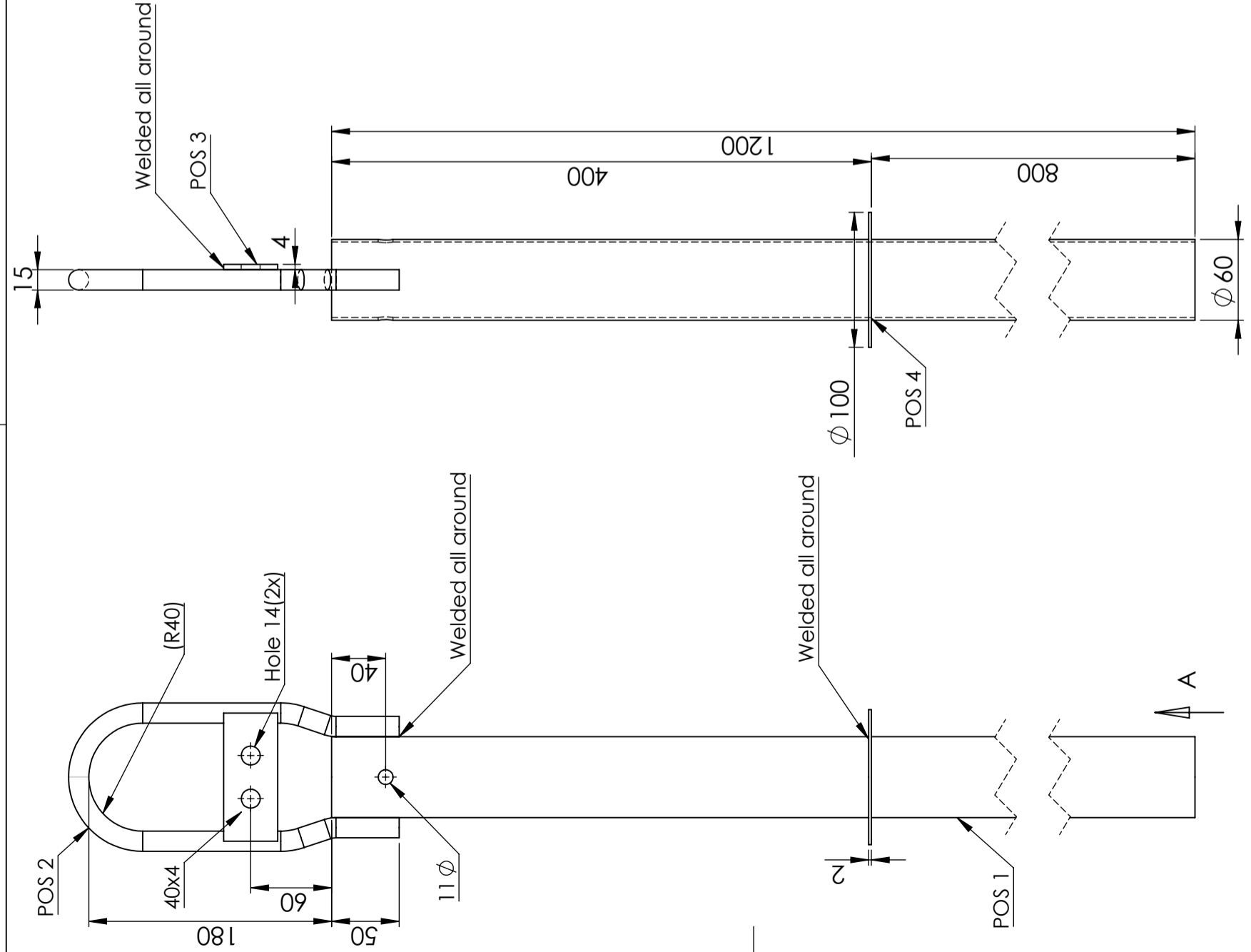


An Lebensmittel
angepasst



Einfach zu
reinigen

| | | | |
|----------|------------------|------|----------|
| Revision | Reason of change | Date | Approved |
| | | | |



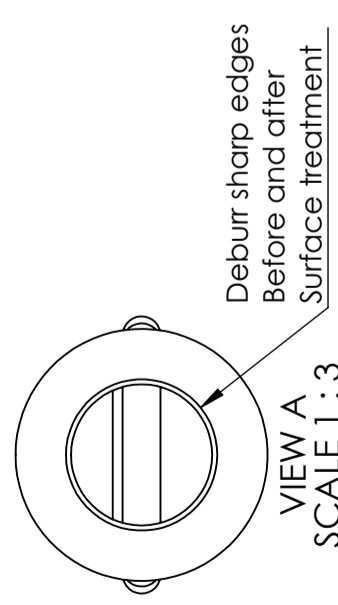
- POS 1
tube Material: EN 10305-3 (DIN 2394). t: 2 mm
- POS 2
rod Material: EN 10125 Fe 360B. ϕ 15
- POS 3
Plate Material: EN 10125 FE 360B. t: 4 mm
- POS 4
Plate Material: EN 10130 FeP01. t: 2 mm

Coating: Fe/Zn 115 ISO 1461.

DETAIL C
SCALE 1 : 2 SECTION B-B

The bolt / nut / washer shall be assembled on each bouyrod

| A | B | C |
|---------------------------------|--------------------|-----------------------------------|
| Bolt ISO 4014 DIN 931 FZV | Nut DIN 985 FZV | Washer 30x30x3 S4B FZV DIN 436 |
| M10 x 80 62357 | 1 M10 Nyloc 62355 | 1 62364 |
| QTY | QTY | QTY |
| 1 | 1 | 2 |



| | | | | | | |
|----------------------|--------------|--------------------|------------------------------------|-------------------------------|---------------|-------|
| Designed by | Inspected by | Approved by - Date | General tolerance SS-ISO 2768-1 | General surface finish, Ra | View position | Scale |
| | | - | G | G | | 1:10 |
| Owner | | | | | | |
| Title/Name | | | | | | |
| Bojten 62220 120 LIT | | | | | | |
| Drawing Number | | | | | | |
| 62220 | | | | | | |
| Edition | | | | | | Page |
| A | | | | | | 1(1) |



This drawing and design is the property of CIPAX. Copying and distribution of the drawing or any contents is prohibited without written permission from authorised personal at CIPAX