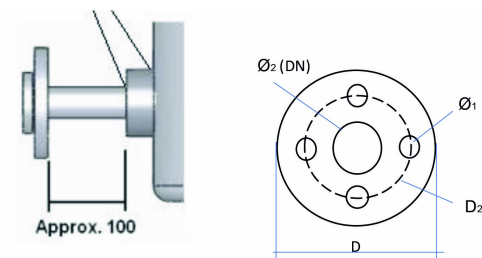


## Flanged connections



Including assembling. Flanges are fitted according to your specification. The diameter in the table below is the flange pipes external diameter. For flanges assembled on the tanks side wall, we only recommend flanges up to DN150 (160 mm external diameter). All according to DVS 2205-2.



Item	Description	D (MM)	D2 (MM)	Ø1 (MM)	Ø2 pipe (MM)	Max pressure (Bar)
S693191	Connection flanged DN25 PN16	115	85	14	25	16
S693211	Connection flanged DN40 PN16	151	110	18	40	16
S693251	Connection flanged DN100 PN16	220	180	18	100	16
S693241	Connection flanged DN80 PN16	202	160	18	80	16
S60019	Connection flanged DN20 PN16	108	75	14	20	16
S60029	Connection flanged DN200 PN10	340	295	22	200	10
S693201	Connection flanged DN32 PN16	140	100	18	32	16
S693231	Connection flanged DN65 PN16	186	145	18	65	16
S693221	Connection flanged DN50 PN16	165	125	18	50	16
S60028	Connection flanged DN150 PN16	285	240	22	150	16
S60027	Connection flanged DN125 PN16	250	210	18	125	16

PN=Pressure class

### Variants

S60019	Connection flanged DN20 PN16, mounted
S693191	Connection flanged DN25 PN16, mounted
S693201	Connection flanged DN32 PN16, mounted
S693211	Connection flanged DN40 PN16, mounted
S693221	Connection flanged DN50 PN16, mounted
S693231	Connection flanged DN65 PN16, mounted
S693241	Connection flanged DN80 PN16, mounted
S693251	Connection flanged DN100 PN16, mounted
S60027	Connection flanged DN125 PN16, mounted
S60028	Connection flanged DN150 PN16, mounted
S60029	Connection flanged DN200 PN10, mounted