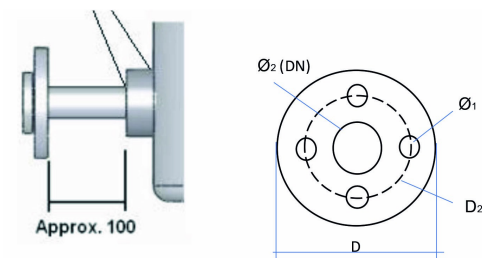


Flanged connections



Including assembling. Flanges are fitted according to your specification. The diameter in the table below is the flange pipes external diameter. For flanges assembled on the tanks side wall, we only recommend flanges up to DN150 (160 mm external diameter). All according to DVS 2205-2.



| Item | Description | D (MM) | D2 (MM) | Ø1 (MM) | Ø2 pipe (MM) | Max pressure (Bar) |
|---------|-------------------------------|--------|---------|---------|--------------|--------------------|
| S693191 | Connection flanged DN25 PN16 | 115 | 85 | 14 | 25 | 16 |
| S693211 | Connection flanged DN40 PN16 | 151 | 110 | 18 | 40 | 16 |
| S693251 | Connection flanged DN100 PN16 | 220 | 180 | 18 | 100 | 16 |
| S693241 | Connection flanged DN80 PN16 | 202 | 160 | 18 | 80 | 16 |
| S60019 | Connection flanged DN20 PN16 | 108 | 75 | 14 | 20 | 16 |
| S60029 | Connection flanged DN200 PN10 | 340 | 295 | 22 | 200 | 10 |
| S693201 | Connection flanged DN32 PN16 | 140 | 100 | 18 | 32 | 16 |
| S693231 | Connection flanged DN65 PN16 | 186 | 145 | 18 | 65 | 16 |
| S693221 | Connection flanged DN50 PN16 | 165 | 125 | 18 | 50 | 16 |
| S60028 | Connection flanged DN150 PN16 | 285 | 240 | 22 | 150 | 16 |
| S60027 | Connection flanged DN125 PN16 | 250 | 210 | 18 | 125 | 16 |

PN=Pressure class

Variants

| | |
|---------|--|
| S60019 | Connection flanged DN20 PN16, mounted |
| S693191 | Connection flanged DN25 PN16, mounted |
| S693201 | Connection flanged DN32 PN16, mounted |
| S693211 | Connection flanged DN40 PN16, mounted |
| S693221 | Connection flanged DN50 PN16, mounted |
| S693231 | Connection flanged DN65 PN16, mounted |
| S693241 | Connection flanged DN80 PN16, mounted |
| S693251 | Connection flanged DN100 PN16, mounted |
| S60027 | Connection flanged DN125 PN16, mounted |
| S60028 | Connection flanged DN150 PN16, mounted |
| S60029 | Connection flanged DN200 PN10, mounted |