

CPX Container 1000L cylindrical

Separate lid with a handle; the lid rests on top of the container. The container can be supplied with connections as required. Flat surface for mounting connections on the lower side of the tank.

Art.nr: 11008



Requires double door



Approximate size

Specifications

Material	PE
Shape	Rectangular
Bottom shape	Straight
Design	Open
Lid type	
Color	Natural
Volume (L)	1000
Height (mm)	1320
Diameter (mm)	1100
Surface area (m2)	1.16
Weight (kg)	40
Tollstatistical code	3925100000
GTIN	7090046760252

Recycling



Characteristics



Customizable containers



Recyclable



Wide temperature range



Chemical resistance



Leak test



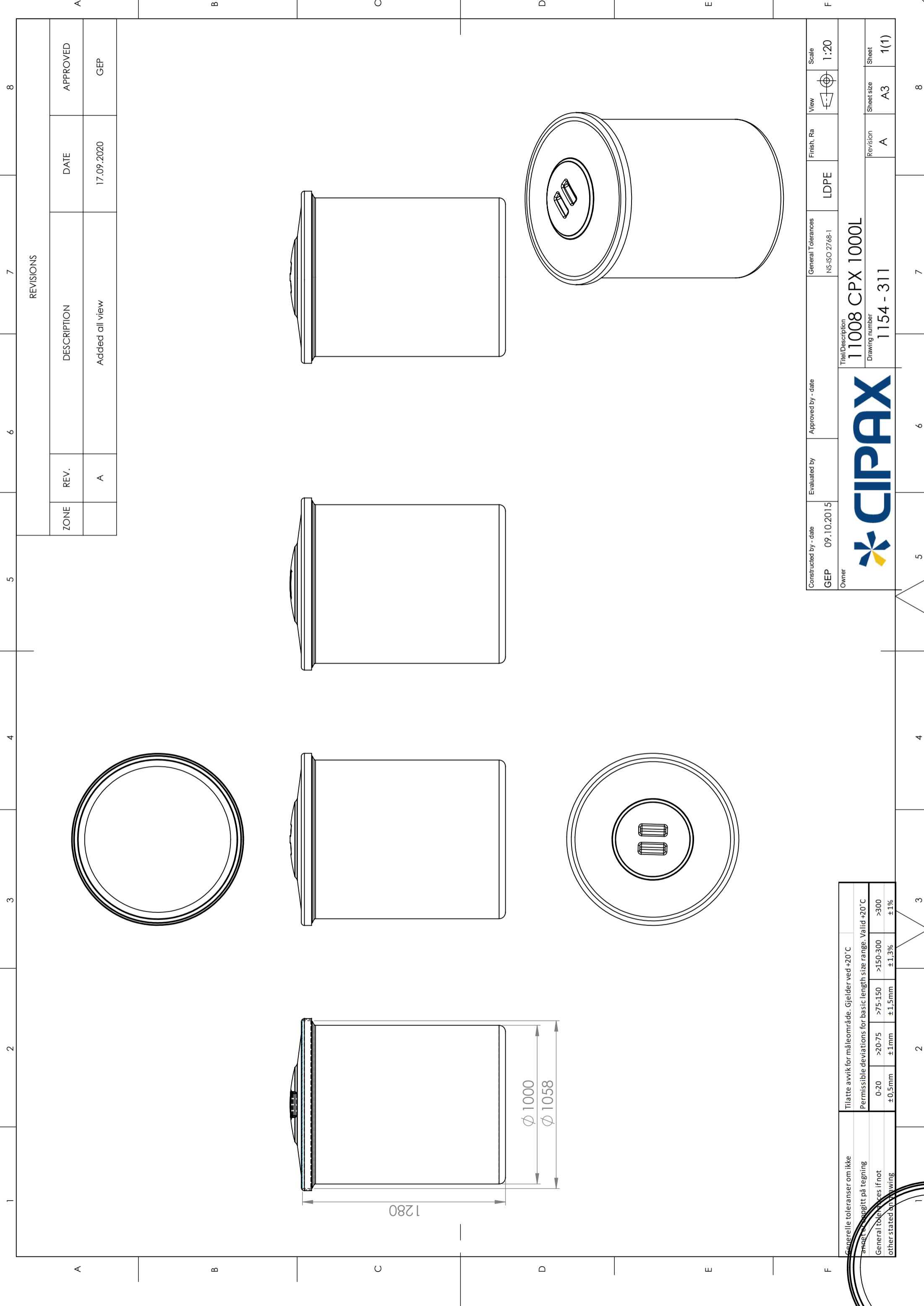
Logistics solutions



Suitable for food contact




Easy to clean



REVISIONS

ZONE	REV.	DESCRIPTION	DATE	APPROVED
	A	Added all view	17.09.2020	GEP

Constructed by - date	GE	09.10.2015	Evaluated by	Approved by - date	General Tolerances	NS-ISO 2768-1	Finish, Ra	LDPE	View	Scale	1:20
Owner											
											
Title/Description											
11008 CPX 1000L											
Drawing number											
1154 - 311											
Revision											
A											
Sheet size											
A3											
Sheet											
1(1)											

Generelle toleranser om ikke angitt på tegning	Tilatte avvik for måleområde. Gjelder ved +20°C		
General tolerances if not other stated on drawing	Permissible deviations for basic length size range. Valid +20°C		
	0-20	>20-75	>75-150
	±0,5mm	±1mm	±1,5mm
			>150-300
			±1,3%
			>300
			±1%