



## CPX Container 3000L cylindrical

The tank is supplied with a separate lid with an integral handle; the lid rests on top of the tank. The container can be supplied with connections as required. Flat surface for mounting connections on the lower side of the tank.

Art.nr: 13000



Requires double door



Approximate size

### Specifications

Material	PE
Shape	Cylindrical
Bottom shape	Straight
Design	Open
Lid type	
Color	Natural
Volume (L)	3000
Height (mm)	2060
Diameter (mm)	1500
Surface area (m <sup>2</sup> )	2.25
Weight (kg)	110
Tollstatistical code	3925100000
GTIN	7090046760276

Recycling



### Characteristics



Customizable containers



Recyclable



Wide temperature range



Chemical resistance



Leak test



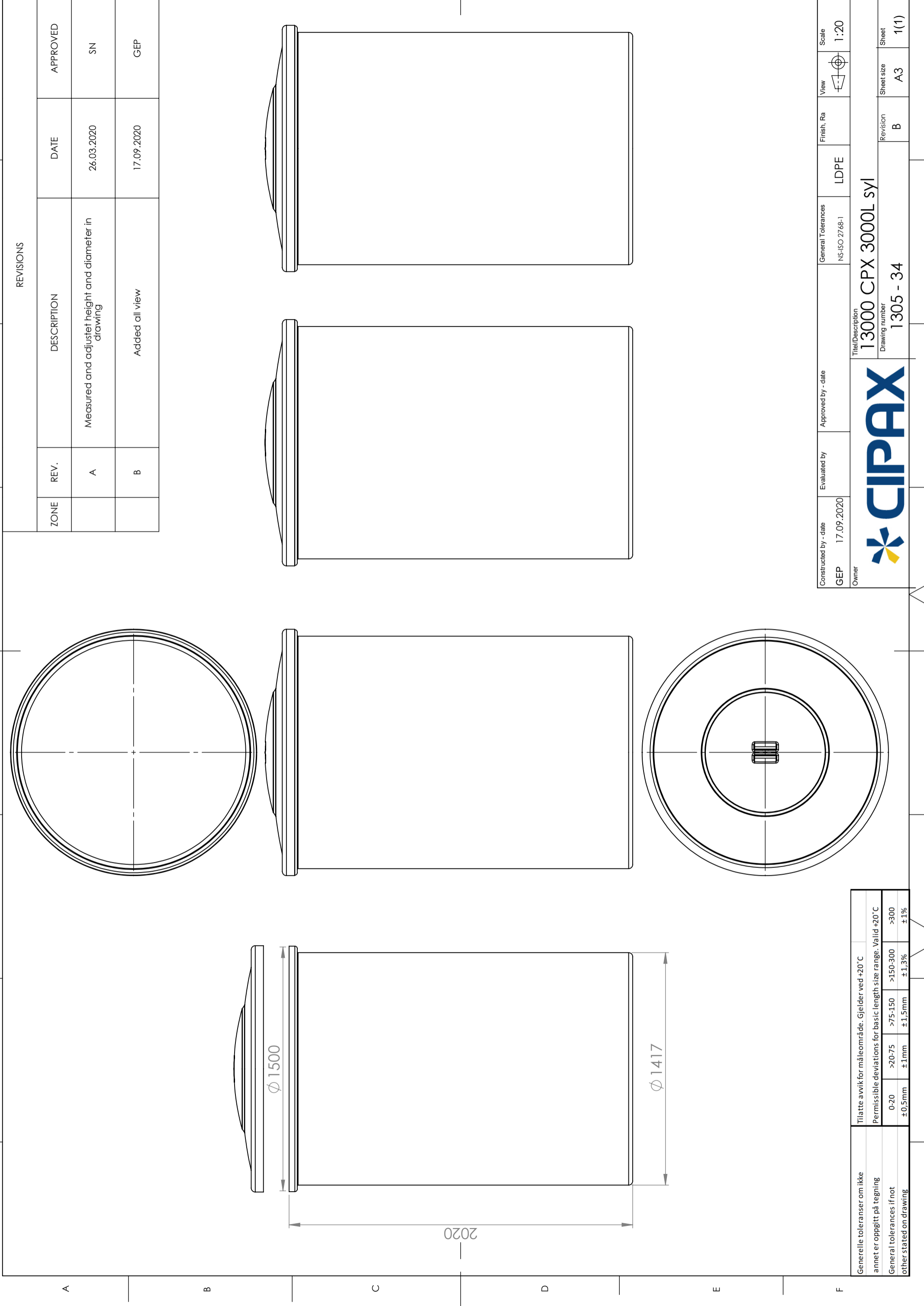
Logistics solutions



Suitable for food contact



Easy to clean



REVISIONS

ZONE	REV.	DESCRIPTION	DATE	APPROVED
	A	Measured and adjustet height and diameter in drawing	26.03.2020	SN
	B	Added all view	17.09.2020	GEP

Generelle toleranser om ikke annet oppgitt på tegning	Tilatte avvik for måleområde. Gjelder ved +20° C
General tolerances if not other stated on drawing	Permissible deviations for basic length size range. Valid +20° C
	0-20 ±0.5mm
	>20-75 ±1mm
	>75-150 ±1.5mm
	>150-300 ±1.3%
	>300 ±1%

Constructed by - date	Evaluated by	Approved by - date	General Tolerances	Finish, Ra	View	Scale
GEP 17.09.2020			NS-ISO 2768-1	LDPE		1:20
Owner	Title/Description		Revision			
	13000 CPX 3000L SYI		B			
	Drawing number		Sheet size			
	1305 - 34		A3			
			Sheet			
			1(1)			

