

CPX Silo 5500L cylindrical

Art.nr: 40808



Requires double door



Approximate size

Specifications

Material	PE
Shape	Cylindrical
Bottom shape	Conical
Design	Open
Color	Natural
Volume (L)	5500
Height (mm)	3060
Diameter (mm)	1680
Weight (kg)	180
Tollstatistical code	3925100000

Recycling



Characteristics



Wide temperature range



Chemical resistance



Leak test



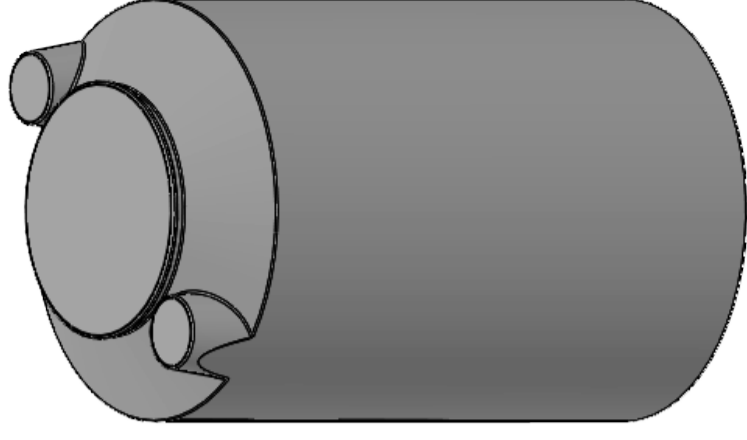
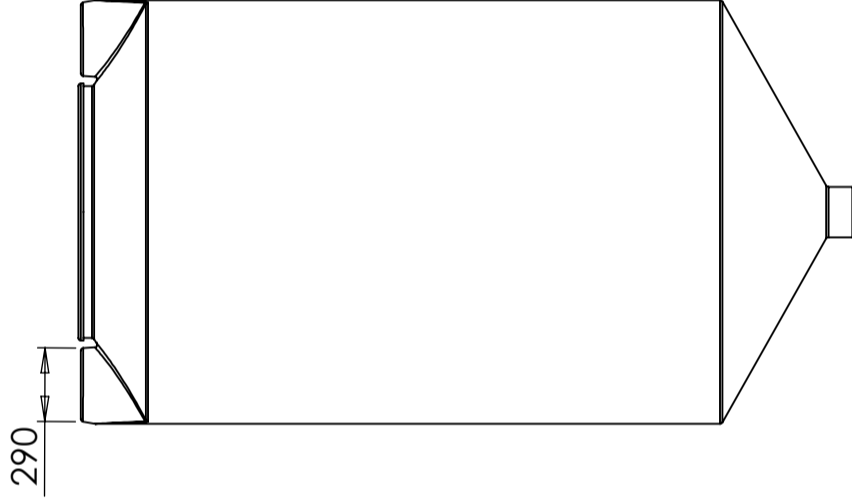
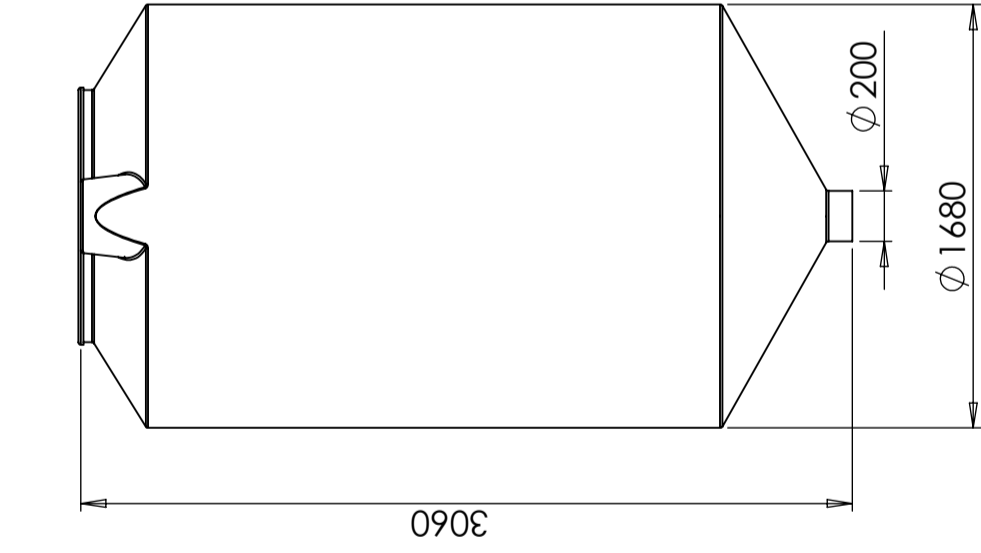
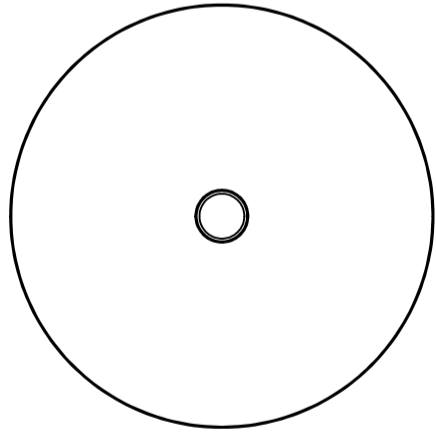
Logistics solutions



Suitable for food contact



Easy to clean



Revision

REV.

Ändringsmeddelande

Datum

Godkänd

This drawing and design is the property of Cipax.
Copying and distribution of the drawing or any contents
is prohibited without written permission from authorised
personal at Cipax

Konstruerad av	Granskad av	Godkänd av - datum	Generell tolerans SS-ISO 2768-1	Generell Ytjämnhet, Ra	Vyplacering	Skala
		-				1:30
Ägare			Titel/Benämning			Blad
			CPX Silo 5500L cylindrisk			1(1)
			Ritningsnummer			Utgåva
			40808			A