

CPX Silo 600L cylindrical

Art.nr: 40803



Requires single door



Approximate size

Specifications

Material	PE
Shape	Cylindrical
Bottom shape	Conical
Design	Open
Color	Natural
Volume (L)	600
Height (mm)	1710
Diameter (mm)	760
Weight (kg)	27
Tollstatistical code	3925100000

Recycling



Characteristics



Wide temperature range



Chemical resistance



Leak test



Logistics solutions

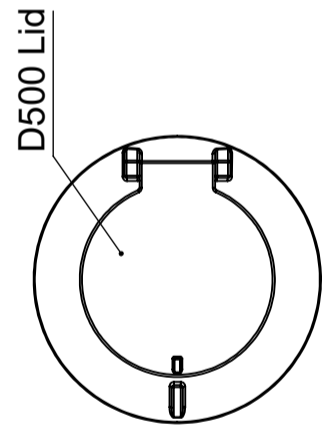
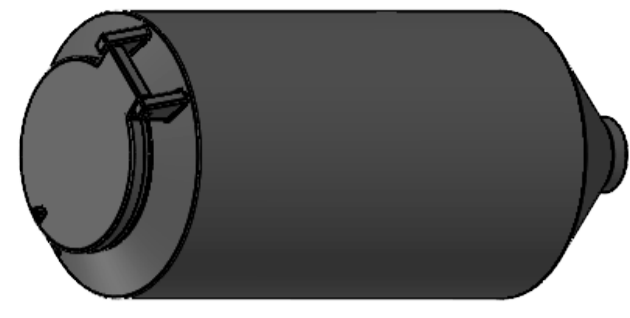
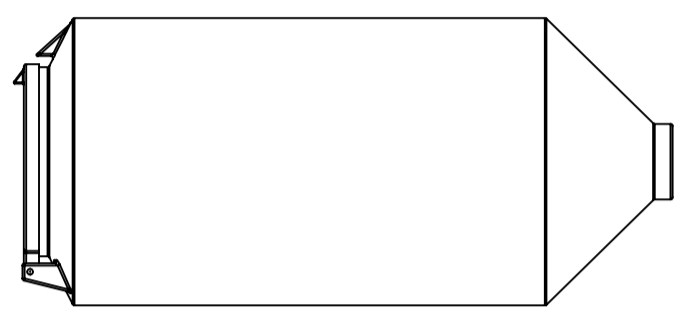
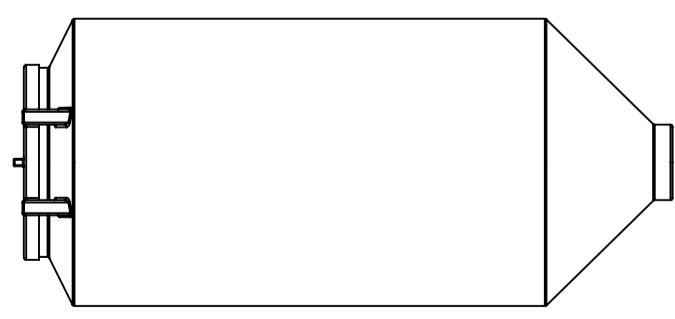
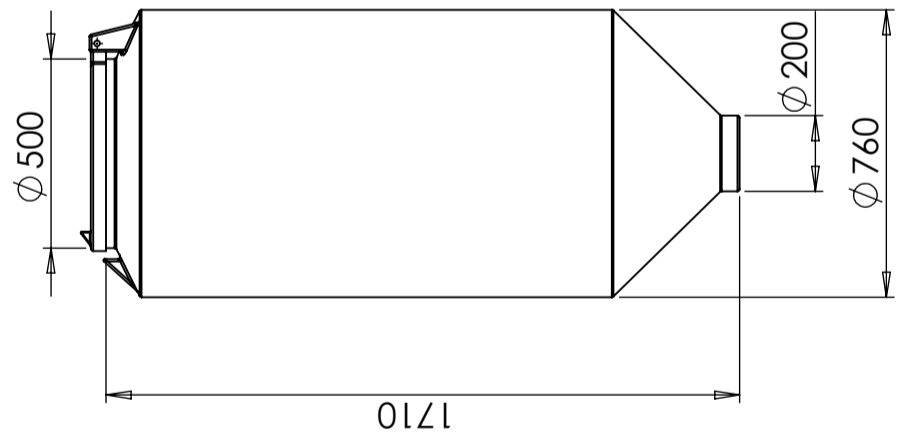
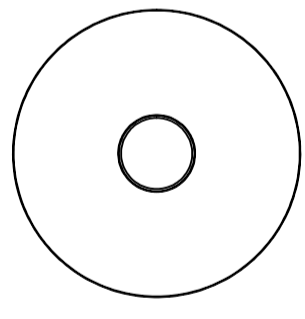


Suitable for food contact



Easy to clean

Revision		
REV.	Ändringsmeddelande	Datum
		Godkänd



This drawing and design is the property of CIPAX. Copying and distribution of the drawing or any contents is prohibited without written permission from authorised personal at CIPAX

Konstruerad av	Granskad av	Godkänd av - datum	Generell tolerans SS-ISO 2768-1	Generell Ytjämnhet, Ra	Vyplacering	Skala	
		-				1:20	
CIPAX Ägare Titel/Benämning CPX Silo 600L cylindrisk Ritningsnummer 40803							
Utgåva						A	Blad
							1(1)