

CPX Storage tank 2200L black



The tank has a 600 mm O-ring sealed inspection hatch attached to the tank with a painted tubular stand. There are a total of four flat mounting surfaces on the top of the tank and its lower side. The tank is completed as necessary with a safety bund and suitable connections. For tare weight 1.85 kg/dm³.


Art.nr: 12005



Requires double
door



Approximate size

Specifications	
Material	PE
Shape	Cylindrical
Bottom shape	Straight
Design	Closed
Lid type	
Color	Black
Volume (L)	2200
Height (mm)	1854
Diameter (mm)	1340
Surface area (m ²)	1.85
Weight (kg)	75
Tare weight (max kg/l)	1.85
Tollstatistical code	3925100000
Recycling	

Characteristics



Customizable
containers



Recyclable



Wide
temperature
range



Chemical
resistance



Leak test



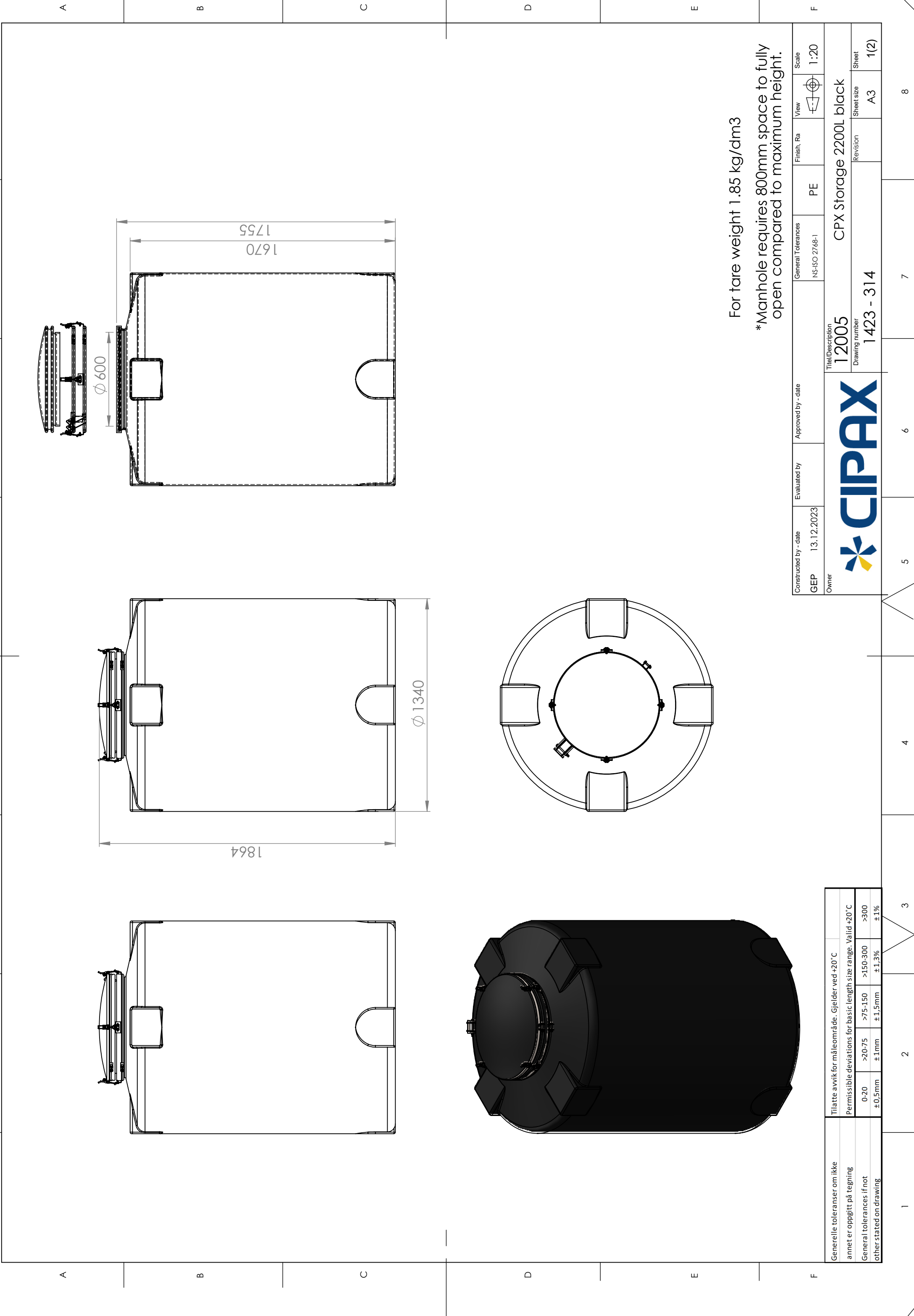
Logistics
solutions



Suitable for
food contact



Easy to clean



For tare weight 1.85 kg/dm3

*Manhole requires 800mm space to fully open compared to maximum height.

Constructed by - date GEP 13.12.2023		Evaluated by	Approved by - date	General Tolerances NS-ISO 2768-1	Finish, Ra PE	View 	Scale 1:20
Owner		Title/Description 12005 CPX Storage 2200L black					
Drawing number 1423 - 314		Revision		Sheet size A3		Sheet 1(2)	
Tilatte avvik for måleområde. Gjelder ved +20° C		Permissible deviations for basic length size range. Valid +20° C		0-20 ±0,5mm		>20-75 ± 1mm	
Generelle toleranser om ikke annet er oppgitt på tegning		General tolerances if not other stated on drawing		>75-150 ±1,5mm		>150-300 ± 1,3%	
				>300 ±1%			