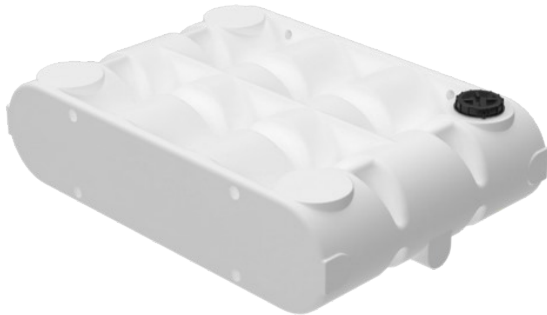


## CPX Transport tank 500 L



Our innovative 500 litre transport tank is designed for shock-absorbing and stabilising liquids efficiently in all directions, making it ideal for a variety of applications. With the ability to be positioned both vertically and horizontally, it's flexible enough to fit most vehicles such as trucks, pick-ups, trailers, or boats. Its stability makes it perfect for connections, pumps, and powerful flows.

With a slim design of only 420mm in size, our transport tank is efficient in terms of space utilisation and passage through tight spaces. This makes it very suitable for storing liquids on boats and smaller vessels where it could contain drinking water, grey water or black water.

From portable irrigation systems and cleaning to use in agriculture and animal handling, our tank is a reliable partner. The transport tank is also perfect for fire fighting, de-icing or providing fresh water at events.

Art.nr: 21551




Requires single door



Approximate size

### Specifications

Material	PE
Design	Closed
Lid type	150 mm O-ring sealed screw lid
Color	Natural
Volume (L)	500
Length (mm)	1740
Width (mm)	1200
Height (mm)	420
Weight (kg)	70
Tare weight (max kg/l)	1.2
Recycling	 HDPE

### Characteristics



Customizable containers



Recyclable



Wide temperature range



Chemical resistance



Leak test

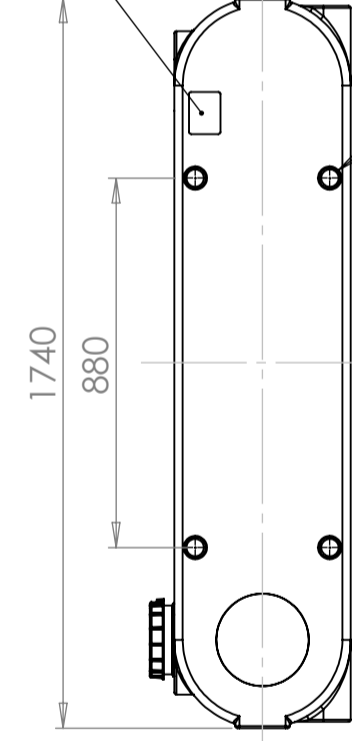
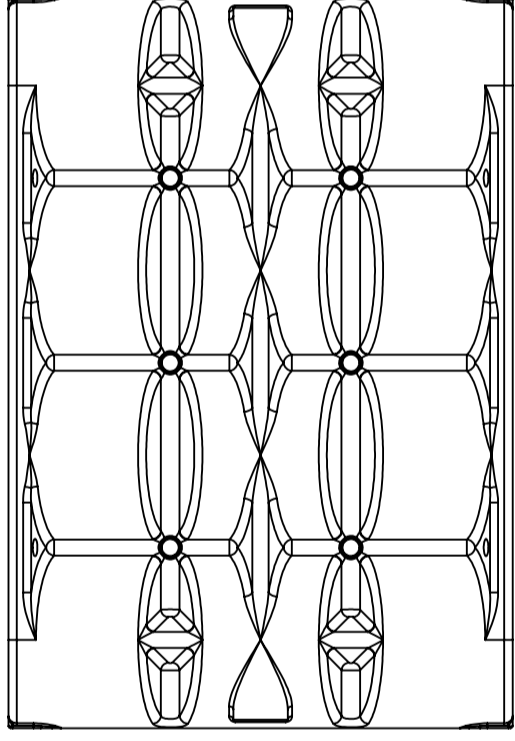


Logistics solutions

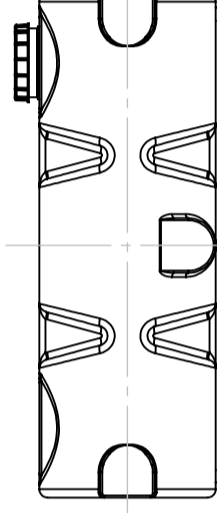


Suitable for food contact

Revision		Godkänd	
REV.	Ändringsmeddelande	Datum	

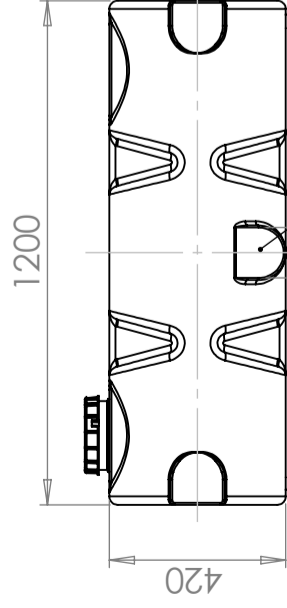
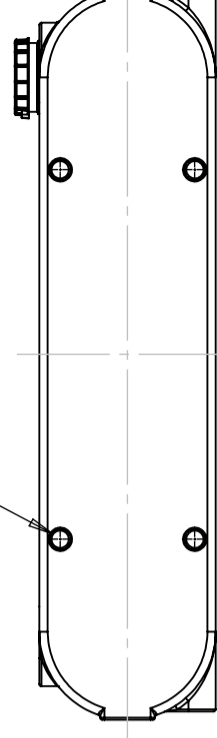


Logo och datummärkning  
Logo and date mark



Ø40 Hål för förankring (4x)  
Ø40 Hole for anchoring (4x)

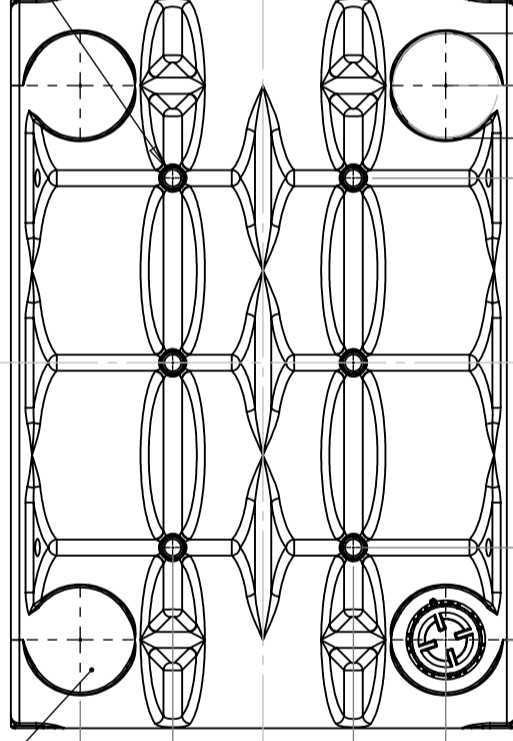
Ø40 Hål för förankring (4x)  
Ø40 Hole for anchoring (4x)



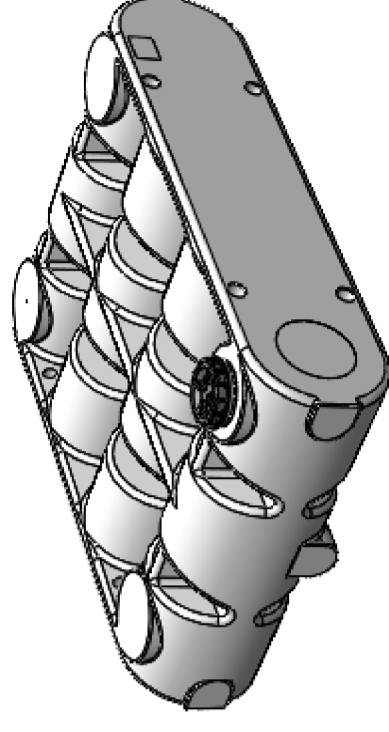
Yta för extra anslutningar (6x)  
Surface for optional connections (6x)

Yta för extra anslutningar (4x)  
Surface for optional connections (4x)

Ø40 Hål för förankring (6x)  
Ø40 Hole for anchoring (6x)



Ø 250(4x)



Konstruerad av <b>JA</b>	Granskad av <b>FB</b>	Godkänd av - datum <b>JA 2024-06-17</b>	Generell tolerans SS-ISO 2768-1	Generell Ytjämnhet, Ra	Vyplacering	Skala <b>1:20</b>
Ägare		Titel/Benämning <b>Transport Tank 500L, Horizontal Version</b>		Utgåva <b>A</b>		Blad <b>1(1)</b>
		Ritningsnummer <b>21551 Assembly</b>				

Generella toleranser om ej annat anges på ritning	Tillåtna avvikelser för längdbasområde. Gäller + 20°C		
General tolerances if not other stated on drawing	Permissible deviations for basic length size range. Be valid + 20°C		
	0-20	>20-75	>75-150
	± 0,5 mm	± 1 mm	± 1,5 mm
		± 1,3 %	± 1 %
			>300
			± 1 %



Transport Tank 500L, Horizontal Version

Ritningsnummer  
21551 Assembly

Blad  
1(1)