


## CPX Mooring bouy MB 35L natural incl rod

De ankerboei heeft een buitenmantel van slagvast polyethyleen dat is gevuld met freonvrij polystyreenschuim. Gatdiameter 45 mm.

Art.nr.: 30041



Specificaties	
Materiaal	PE
Kleur	Naturel
Inhoud (L)	35
Hoogte (mm)	280
Diameter (mm)	480
Gatdiameter (mm)	45
Recycling	 HDPE

## Eigenschappen



Aanpasbaar



Recyclebaar



Breed  
temperatuurber  
eik:

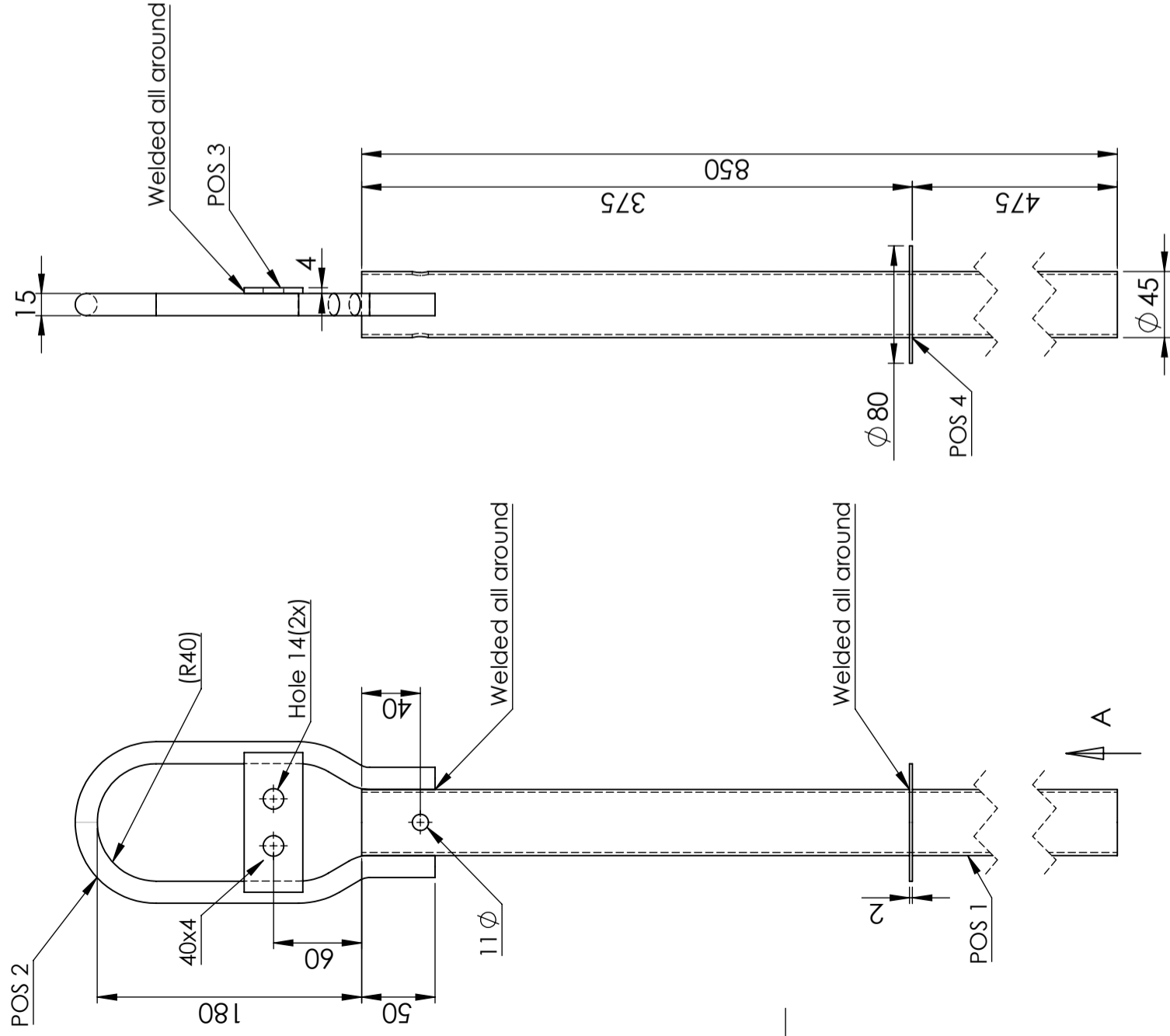


Aangepast voor  
eten



Makkelijk  
schoon te  
maken

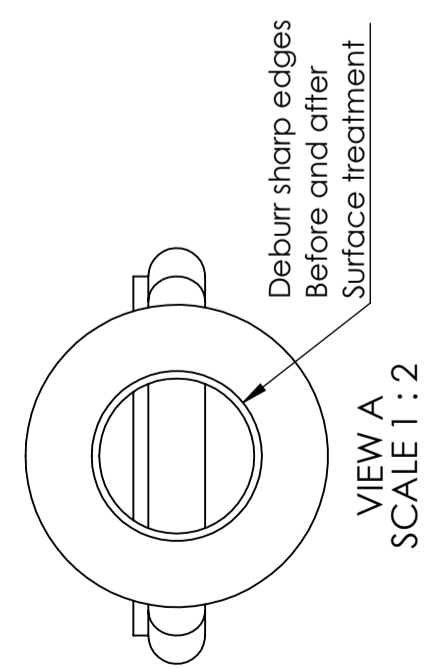
Revision		Reason of change		Date		Approved	
Revision		Reason of change		Date		Approved	



- POS 1  
tube Material: EN 10305-3 (DIN 2394). t: 2 mm
- POS 2  
rod Material: EN 10125 Fe 360B. Ø 15
- POS 3  
Plate Material: EN 10125 FE 360B. t: 4 mm
- POS 4  
Plate Material: EN 10130 FeP01. t: 2 mm

Coating: Fe/Zn 115 ISO 1461.  
**DETAIL C**  
**SCALE 1 : 2 SECTION B-B**

The bolt / nut / washer shall be assembled on each bouyrod		C	
A	B	C	
Bolt ISO 4014 DIN 931 FZV	QTY	Nut DIN 985 FZV	QTY
M10 x 65 62353	1	M10 Nyloc 62355	1
		Washer 30x30x3 S4B FZV DIN 436	QTY
		62364	2



Designed by	Inspected by	Approved by - Date	General tolerance SS-ISO 2768-1	General surface finish, Ra	View position	Scale
		-	G		⊕	1:10
Owner			Title/Name			
CIPAX			Bojten 62201 35 LIT Ø 45			
			Drawing Number		Page	
			62201		A 1(1)	

This drawing and design is the property of CIPAX. Copying and distribution of the drawing or any contents is prohibited without written permission from authorised personal at CIPAX