

CPX Silo 300L cilindrisch

Art.nr.: 40802



Vereist enkele deur



Grootte ongeveer

Specificaties

| | |
|----------------------------------|-------------|
| Materiaal | PE |
| Model | Cilindrisch |
| Bodem | Conisch |
| Uitvoering | Open |
| Kleur | Naturel |
| Inhoud (L) | 300 |
| Hoogte (mm) | 1005 |
| Diameter (mm) | 760 |
| Gewicht (kg) | 15 |
| Statistisch nummer van de douane | 3925100000 |

Recycling



Eigenschappen



Breed temperatuurbereik:



Bestand tegen chemicaliën



Lek testen



Logistieke oplossing

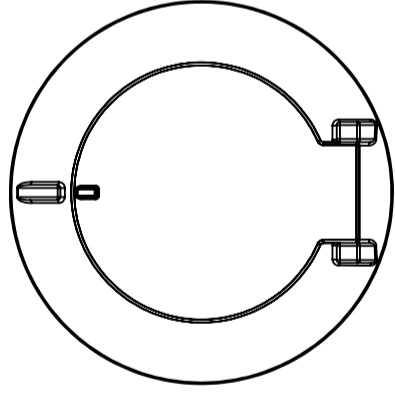
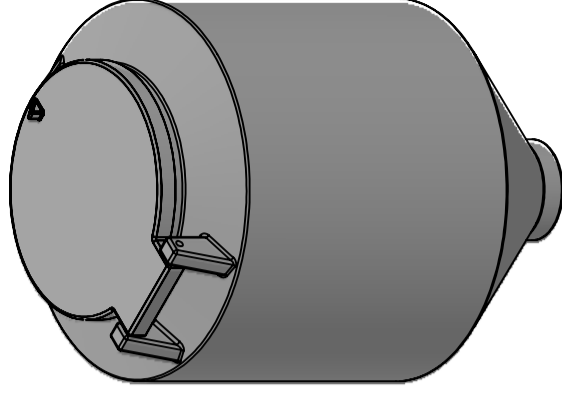
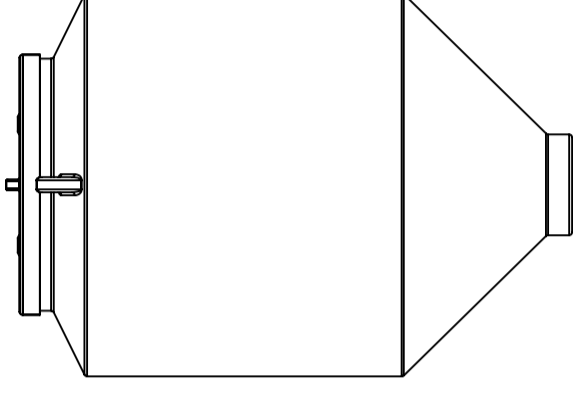
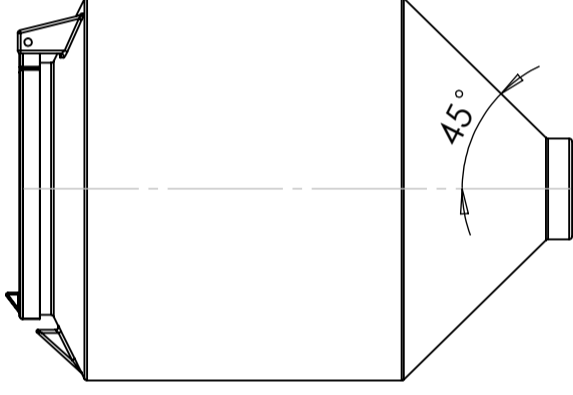
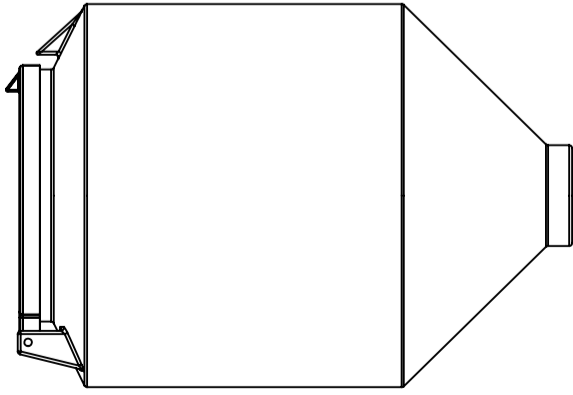
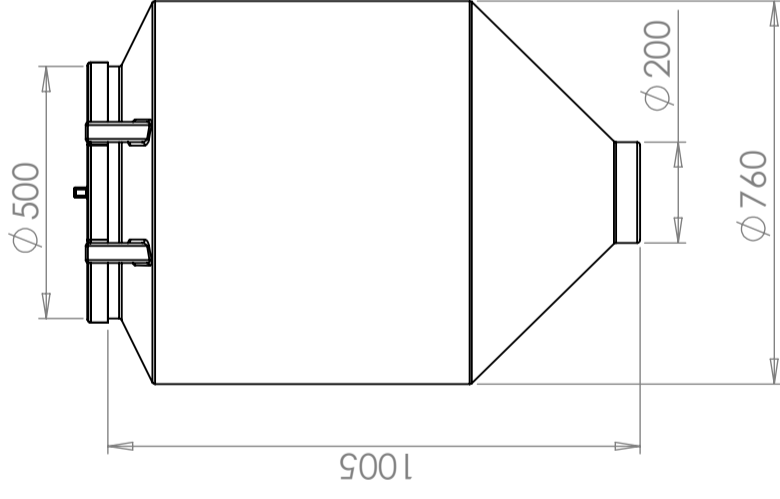
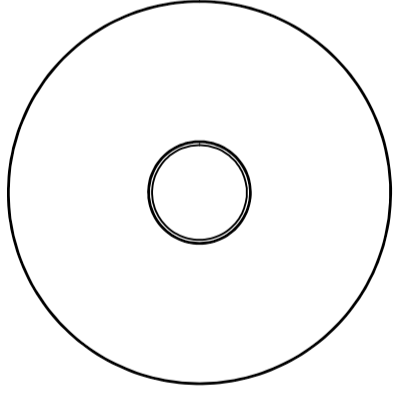


Aangepast voor eten



Makkelijk schoon te maken

| | | |
|----------|--------------------|---------|
| Revision | | |
| REV. | Ändringsmeddelande | Datum |
| | | Godkänd |



This drawing and design is the property of CIPAX. Copying and distribution of the drawing or any contents is prohibited without written permission from authorised personal at CIPAX

| | | | | | | |
|--------------------------|-------------|--------------------|------------------------------------|---------------------------|-------------|-------|
| Konstruerad av | Granskad av | Godkänd av - datum | Generell tolerans SS-ISO 2768-1 | Generell Ytjämnhet, Ra | Vyplacering | Skala |
| | | - | | | | 1:20 |
| Titel/Benämning | | | | | | |
| CPX Silo 300L cylindrisk | | | | | | |
| Ritningsnummer | | | | | | |
| 40802 | | | | | | |
| Utgåva | | | | | | Blad |
| A | | | | | | 1(1) |

