



## CPX Lagringstank 10000L konisk botten lackerat stativ

Höjd inklusive stativ: 4030 mm. För vätskor med densitet upp till 1,2.

Komplekteritakse stativiga art. nr. 60386.

Art.nr: 18027



Ungefärlig storlek

### Specifikationer

Material	PE
Form	Cylindrisk
Bottenform	Konisk
Utförande	Sluten
Typ av lock	600mm O-ringstättad manlucka
Färg	Naturell
Volym (L)	10000
Höjd (mm)	4030
Diameter (mm)	2140
Golvyta (m <sup>2</sup> )	4,6
Vikt (kg)	795
Densitet innehåll (max kg/l)	1,2
Tullstatistiskt nummer	3925100000
Klimatpåverkan (kg CO <sub>2</sub> -ekv.)	2625

Återvinning



### Egenskaper



Anpassningsbar



Återvinningsbar



Brett  
temperaturspann



Kemikalieresiste  
ns



Läcktestning



Logistiklösning

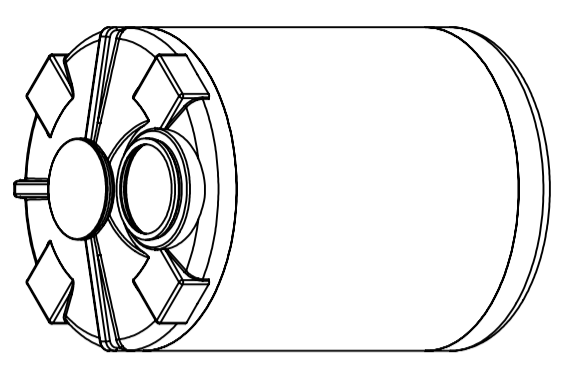
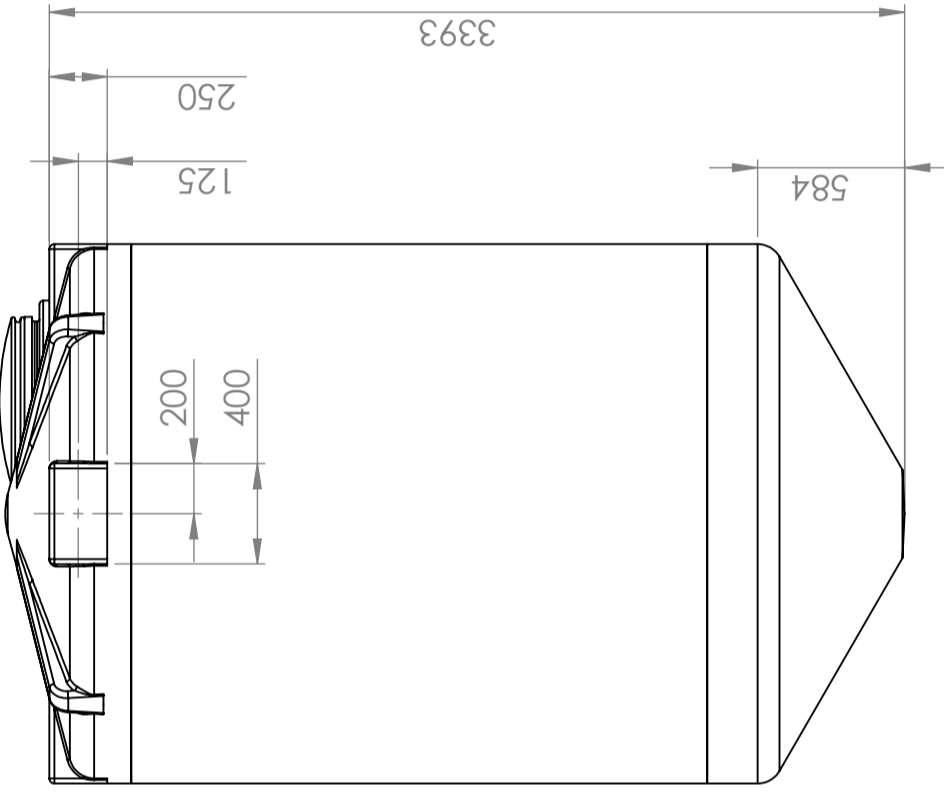
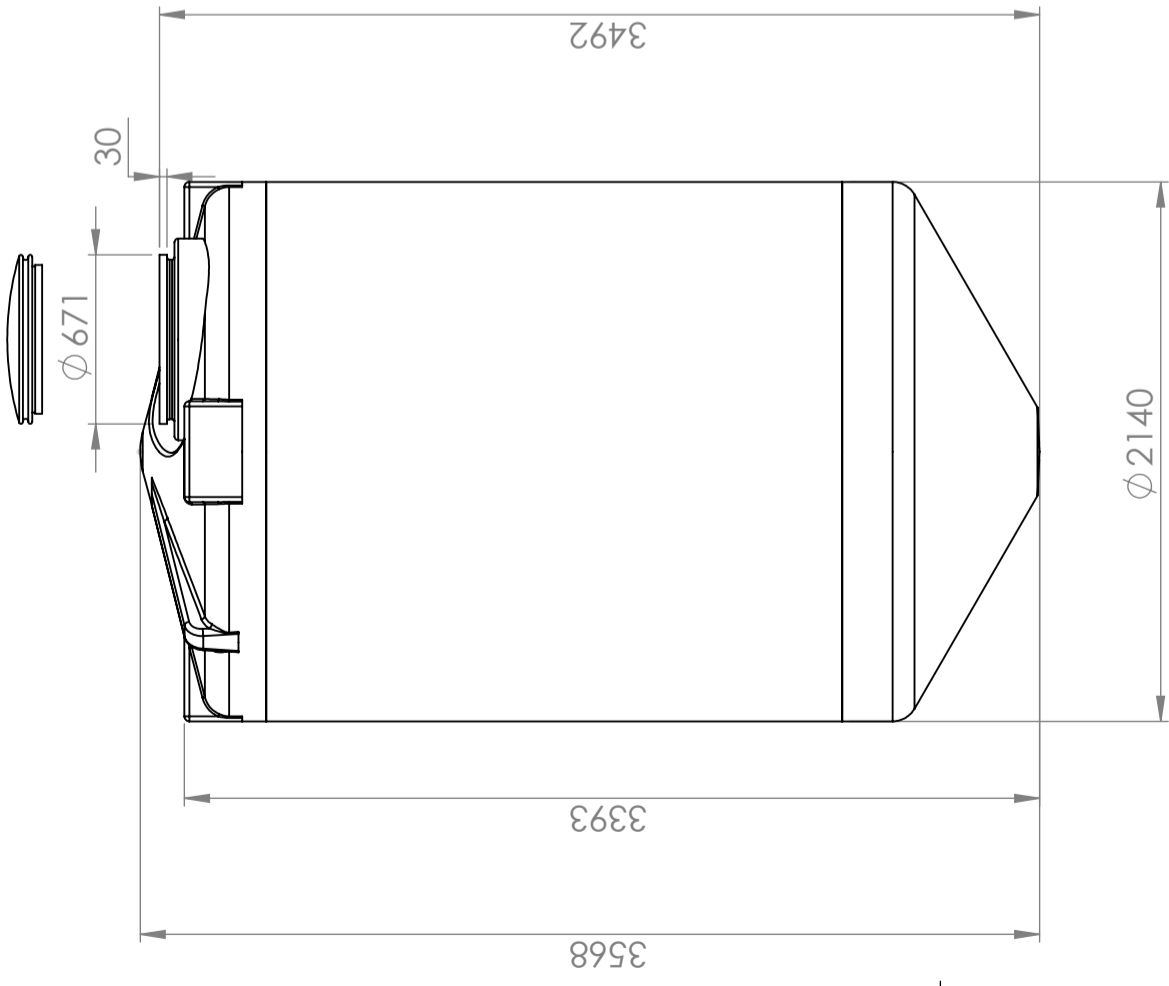


Anpassad för  
livsmedel



Enkel att  
rengöra

This drawing and design is the property of CIPAX. Copying and distribution of the drawing or any contents is prohibited without written permission from authorised personnel at CIPAX



"Manhole requires 800 mm space to open fully. Compared to maximum height"

Generelle toleranser om ikke annet oppgitt på tegning	Tilatte avvik for måleområdet. Gjelder ved +20° C			
General tolerances if not other stated on drawing	Permissible deviations for basic length size range. Valid +20° C			
	0-20	>20-75	>75-150	>150-300
	±0.5mm	±1mm	±1.5mm	±1.3%
				±1%

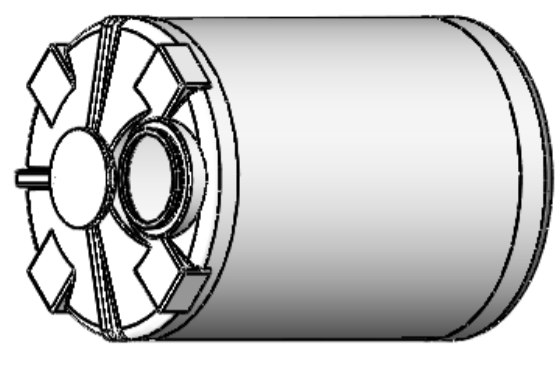
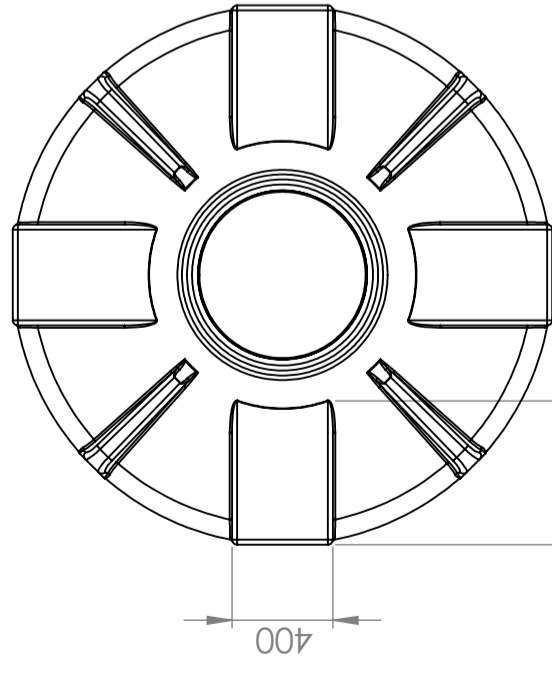
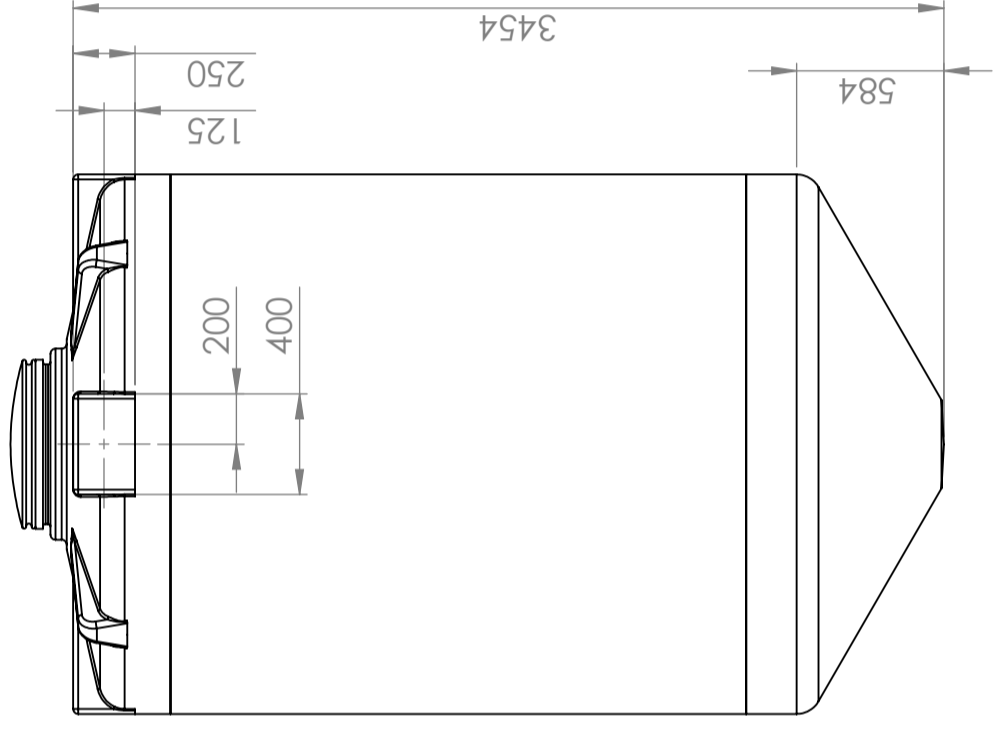
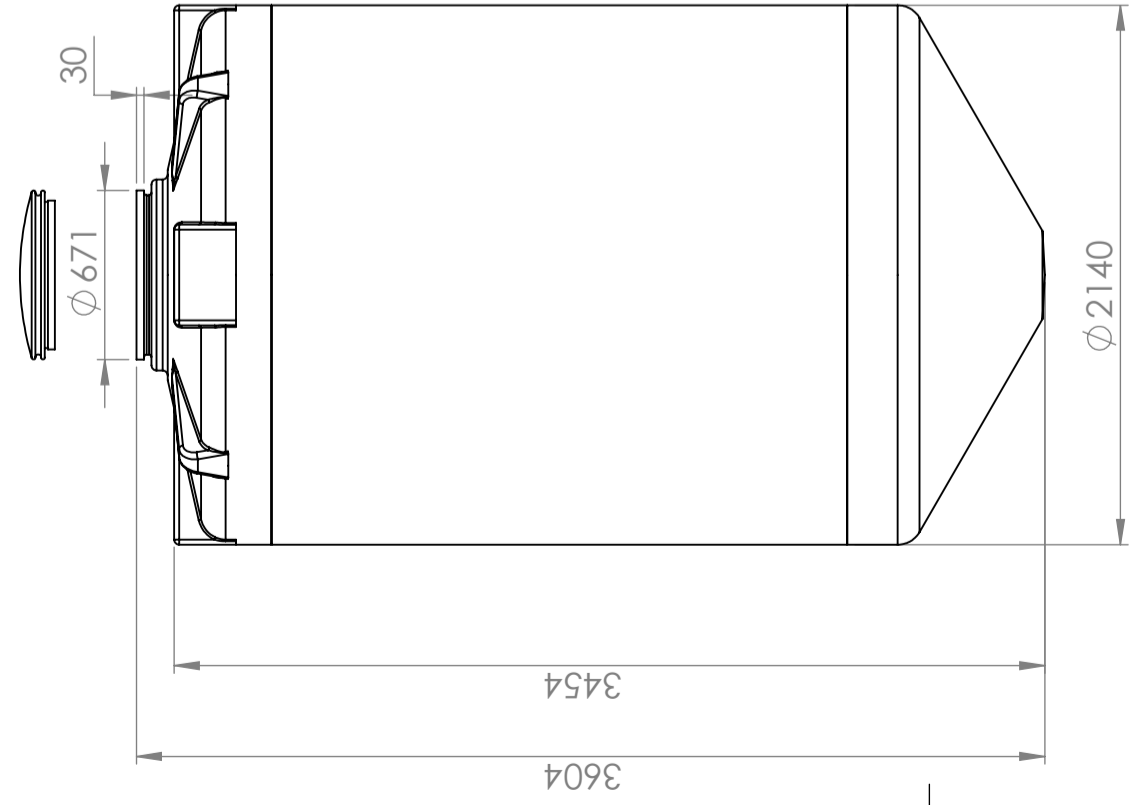
Owner  
**CIPAX**  
 Title/Description  
**1225741**  
 Drawing number  
**627 - 34**

Constructed by - date M.P 22.04.2013	Evaluated by	Approved by - date	General Tolerances NS-ISO 2768-1	Material LDPE	Finish, Ra grit 120	View 	Scale 1:30
Title/Description <b>1225741</b>			Material LDPE				
Drawing number <b>627 - 34</b>			Finish, Ra grit 120				
Owner <b>CIPAX</b>			View 				
Title/Description <b>10000 L Kon excentric</b>			Scale 1:30				
Drawing number <b>627 - 34</b>			Material LDPE				
Owner <b>CIPAX</b>			Finish, Ra grit 120				
Title/Description <b>10000 L Kon excentric</b>			View 				
Drawing number <b>627 - 34</b>			Scale 1:30				
Owner <b>CIPAX</b>			Material LDPE				
Title/Description <b>10000 L Kon excentric</b>			Finish, Ra grit 120				
Drawing number <b>627 - 34</b>			View 				
Owner <b>CIPAX</b>			Scale 1:30				

REVISIONS			
ZONE	REV.	DESCRIPTION	DATE
A	A	Renamed part to 1225741. Made a new drawing and updated views. M.P	22.04.2013

1 2 3 4 5 6 7 8

A B C D E F



"Manhole requires 800 mm space to open fully. Compared to maximum height"

REVISIONS				
ZONE	REV.	DESCRIPTION	DATE	APPROVED
-	A	Renamed part to 1225741. Made a new drawing and updated views. M.P	22.04.2013	-

Constructed by - date	Approved by - date	General Tolerances	Material	Finish, Ra	View	Scale
M.P 22.04.2013		NS-ISO 2768-1	LDPE	grit 120		1:30
Owner	Title/Description					
	1225741		10000 L Kon center			
	Drawing number		Revision			
	627 - 34		A			
			Sheet size		Sheet	
			A3		2(2)	



Generelle toleranser om ikke annet oppgitt på tegning	Tilatte avvik for måleområdet. Gjelder ved +20° C		
General tolerances if not other stated on drawing	Permissible deviations for basic length size range. Valid +20° C		
	0-20	>20-75	>75-150
	±0,5mm	±1mm	±1,5mm
		±1,3%	±1,3%
			±1%
			>300

This drawing and design is the property of CIPAX. Copying and distribution of the drawing or any contents is prohibited without written permission from authorised personal at CIPAX.