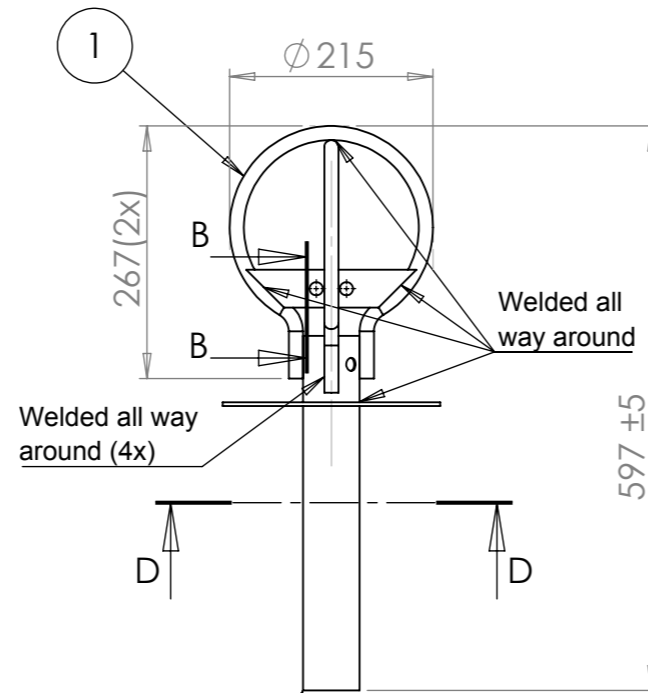
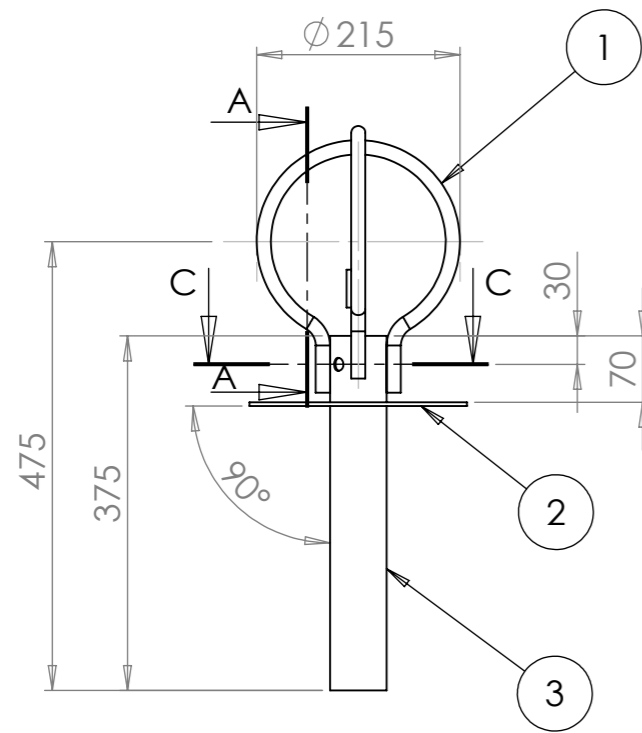
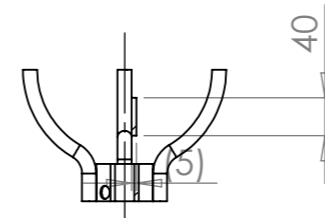
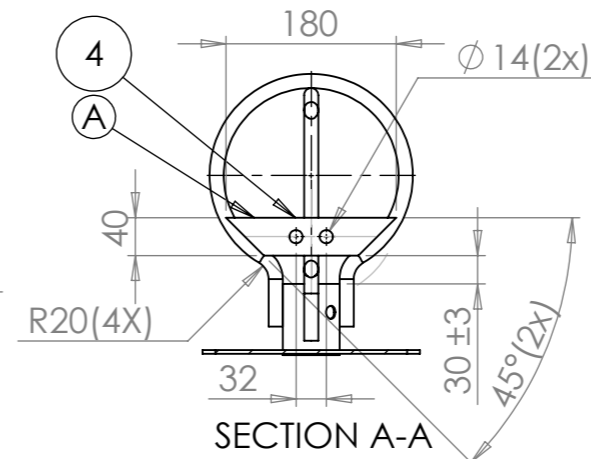
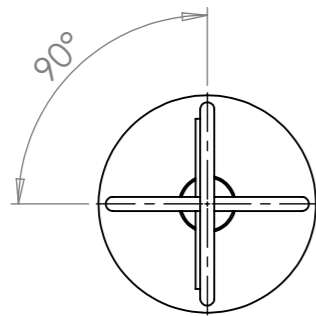


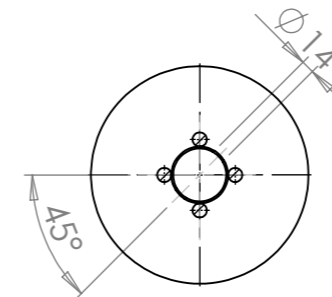
Revision			
REV.	Ändringsmeddelande	Datum	Godkänd
A	Utförande ändrat	2017-04-26	JA



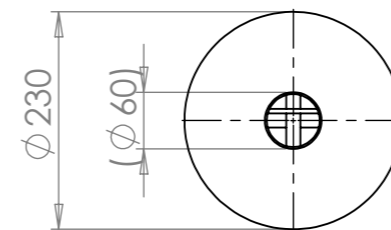
Rörets båda innerändar noggrant gradade!
Sharp edges in the pipes both ends carefully removed!



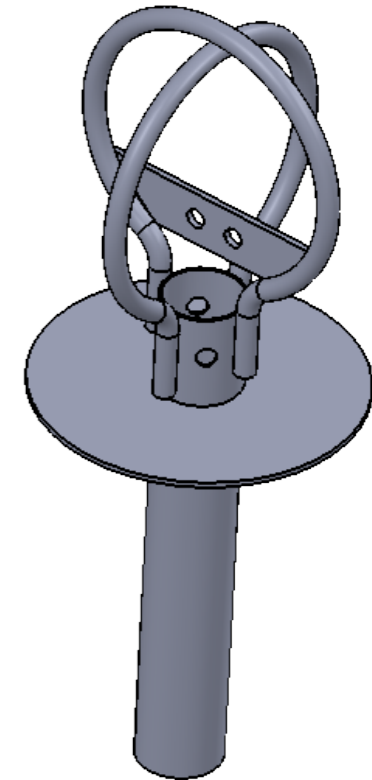
SECTION B-B



SECTION C-C



SECTION D-D



Pos.

1. Stång/Rod: $\varnothing 15$, EN 10025 Fe 360 B
2. Platta/Plate: $t=5$, SJ 235
3. Rör/Pipe: $\varnothing 60 \times 2$, EN 10210-1
4. Platta/Plate: $t=4$, SJ 235

Skarpa kanter brutna/ Sharp edges removed

Ytbehandling/ Surface Treatment: Fe/Zn 115 ISO 1461

Konstruerad av JA	Granskad av SE	Godkänd av - datum JA - 2017-01-27	Generell tolerans SS-ISO 2768-1	Generell Ytjämnhet, Ra	Vyplacering 	Skala 1:8
Ägare 		Titel/Benämning Ten, Pålboj/Long Mooring Buoy		Utgåva A	Blad 1(1)	
		Ritningsnummer 62223				